

CHART CATALOGUE

Contents

1. General Description of the Utility	1
2. Main Menu Buttons and Their Purpose	2
3. Type Operations	3
3.1. Selection of a small set of charts for a certain area (FOLIOS)	4
3.2. Selection of standard chart sets by areas (Extra Large Regions)	7
3.3. Selection of charts one by one (CHART BY CHART)	8
3.4. Viewing of the selected charts	9

1. General Description of the Utility

The Chart Catalogue is designed for the preparation of orders for the purchase of TX-97 format charts from Transas Marine.

The catalogue window consists of three parts:

- Information panel containing the chart catalogues;
- Chart panel with the outlines of selected charts overlaid on the map of the world;
- Utility's main menu.

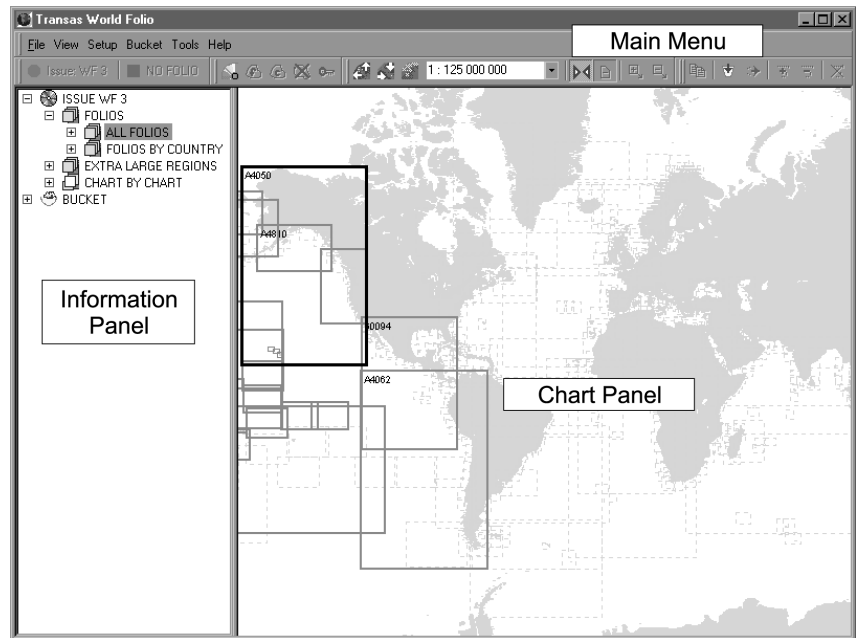


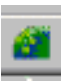




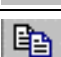







Fig. 1

2. Main Menu Buttons and Their Purpose

Table 1.

Main menu buttons	Purpose of main menu buttons
	To increase the display scale in the chart panel
	To reduce the display scale in the chart panel
	To set the scale of displaying the map of the world in the chart panel
<input type="text" value="1 : 125 000 000"/>	To set the chart display scale in the chart panel
	To synchronise automatically information and chart panels
	To select a chart together with the inserts and plans
	To select charts by using the mouse cursor
	To cancel the selection of charts using the mouse cursor
	To copy the contents of BUCKET folder to the Clipboard
	To load the saved chart lists to the BUCKET folder
	To save the list of charts stored in the BUCKET folder
	To add selected charts to the BUCKET folder
	To delete selected charts from the BUCKET folder
	To delete all the charts from the BUCKET folder

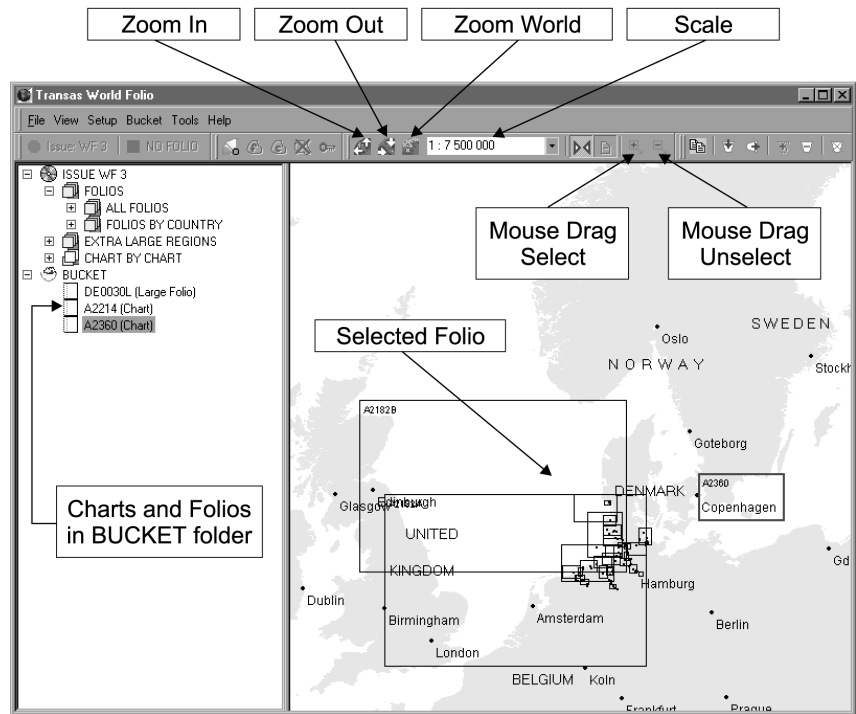


Fig. 2

3. Type Operations

1. Selection of a small set of charts for a certain area (FOLIOS).
2. Selection of a standard set of charts for the areas (EXTRA LARGE REGIONS).
3. Selection of charts one by one (CHART BY CHART).
4. Viewing of the selected charts.






3.1. Selection of a small set of charts for a certain area (FOLIOS)

- Open **Folios** folder in the Information Panel. The catalogue will be divided into two parts: **all the sets of charts (All folios)** arranged in the alphabetical order, and **sets of charts for countries (Folios by Country)**.


Selection from All Folios catalogue


Selection from the Chart Panel:

- Position the cursor on **All Folios** catalogue and press the left mouse button (the catalogue will be highlighted in the blue colour);
- Move the cursor to the Chart Panel on the map of the world. By moving the mouse cursor along the chart you can view the offered sets of charts (**Folios**) over the entire world;
- Select the required area and increase its display scale (Zoom). To do this cut it out of the map of the world by using the following procedure: position the mouse cursor on the corner of the desired fragment, press the left mouse button and without releasing this button move the mouse cursor which will be delineating the area on the map of the world with the movement of the mouse. Having delineated the required area release the button. You can increase or reduce the size of the area by using Zoom In  and Zoom Out  buttons in the Main Menu;
- Select the required **Folio** in the area by moving the mouse cursor to different fragments of the map (different **Folios** will be appearing);
- Fix the selected **Folio** by positioning the mouse cursor on any of the chart frames in the selected **Folio** and double clicking the left mouse button. The Information Panel of the window will display the entire set of all the existing **Folios**, whilst the selected set of charts will be shown in the grey colour;
- Place the selected **Folio** in **BUCKET** folder by positioning the cursor on this button  and pressing the left mouse button;
- To select the next folio repeat the procedure (see Fig. 3).

Selection from the Information Panel (by number and description):

- Position the mouse cursor in the Information Panel on **All folios** catalogue and double click the left mouse button: the catalogue will

open up into a set of “ AU0050L AUSTRALIA. South coast” type sub-catalogues, etc. (see also Fig. 3);

- Select the required catalogue by positioning the mouse cursor on it and pressing the left mouse button: the catalogue will be highlighted in the blue colour, whilst the Chart Panel will display charts of the selected **Folio**;
- Fix the selected **Folio** by positioning the cursor on any chart frame in the selected **Folio** and double clicking the left mouse button;
- Place the selected **Folio** in **BUCKET** folder by positioning the cursor on this button  and pressing the left mouse button.

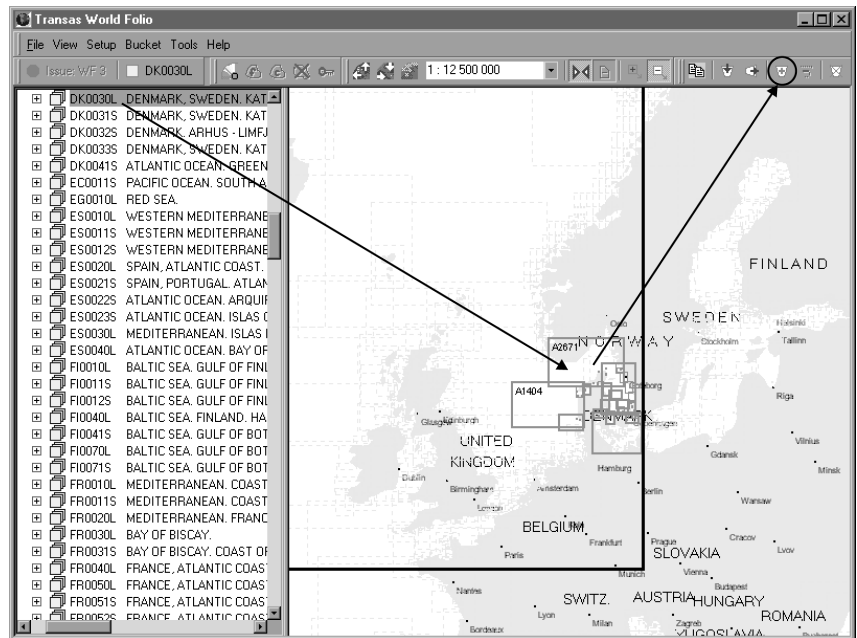


Fig. 3

Selection of charts from Folio by Country catalogue

Selection from the Chart Panel:

- Position the mouse cursor on **Folios by Country** catalogue in the Information Panel and double click the left mouse button: the catalogue will open up into a set of  Australia,  France, etc. type catalogues;

- Select the required country by positioning the mouse cursor on the name and pressing the left mouse button: the catalogue will be highlighted in the blue colour, whilst the Chart Panel will display the fragment of the map of the world showing the selected country;
- Use the mouse cursor on the window's Chart Panel to select the required **Folio**;
- Fix the selected **Folio** by positioning the mouse cursor on any chart frame in the selected **Folio** and double clicking the left mouse button;
- Place the selected **Folio** in **BUCKET** folder by positioning the cursor on the button and pressing the left mouse button.

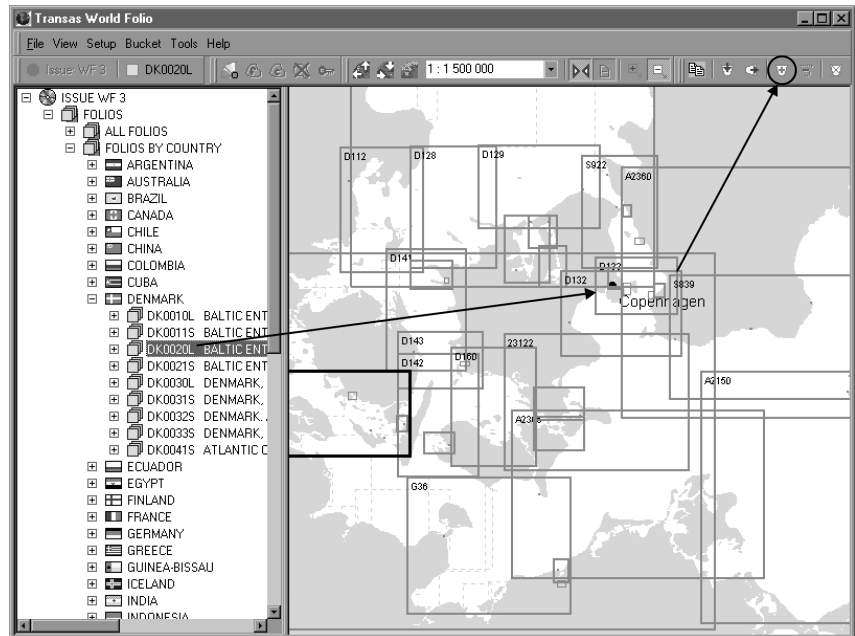



Fig. 4

Selection from the Information Panel:

- Position the mouse cursor on the flag or name of the country in the Information Panel and double click the left button: this catalogue will open up into **FR0030L BAY OF BISCAY** type sub-catalogues displaying all the **Folios** available for the given country;
- To display the chart frames of the selected **Folio** position the cursor on this catalogue in the Information Panel and press the left mouse button;

- Fix the selected **Folio** by positioning the cursor on any chart frame in the selected **Folio** and double clicking the left mouse button;
- Place the selected **Folio** in **BUCKET** folder by positioning the cursor on this button and pressing the left mouse button (see Fig. 4).

3.2. Selection of standard chart sets by areas (Extra Large Regions)

- **Selection of a standard chart set from the Chart Panel**
 - Position the mouse cursor on **Extra Large Regions** catalogue and press the left button: the catalogue will be highlighted in the blue colour;
 - Position the mouse cursor on the window's Chart Panel. Look through 10 **Extra large regions** chart sets by moving the mouse cursor along the chart;
 - Select and fix the required area by positioning the mouse cursor on any chart frame in the given area and double clicking the left mouse button;
 - Place the selected area in the BUCKET folder by positioning the cursor on the button  and pressing the left mouse button.

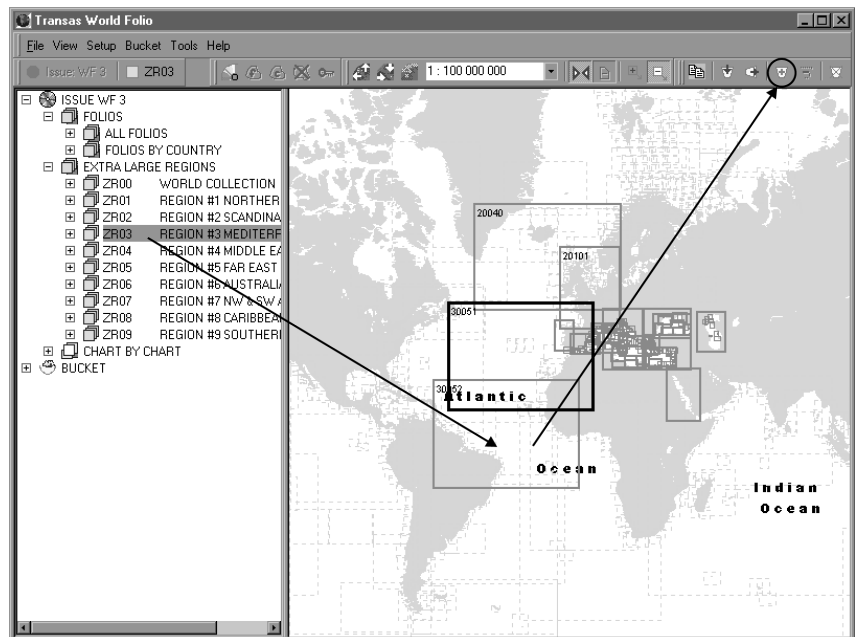






Fig. 5

- Selection of a standard chart set from the Information Panel**
- Position the mouse cursor on **Extra Large regions** catalogue and double click the left mouse button: the catalogue will open up into 10  ZR01 REGION #1 NORTHERN EUROPE type sub-catalogues;
 - Position the mouse cursor on the required catalogue and press the left mouse button: the Chart Panel will display the selected **Extra large region**;
 - Fix the selected **Extra Large Region** by moving the mouse cursor in the Chart Panel to the frame of any chart in the selected area by double clicking the left mouse button;
 - Move the selected area to the BUCKET folder by positioning the mouse cursor on the button  and pressing the left mouse button (see Fig. 5).

3.3. Selection of charts one by one (CHART BY CHART)

- Selection of charts one by one from the Chart Panel**
- Position the mouse cursor on CHART BY CHART catalogue and press the left mouse button: the catalogue will be highlighted in the blue colour, whilst the chart field will display the map of the world with a complete chart collection;
 - Magnify the display of the required area on the chart field by moving the cursor without releasing the left mouse button. Having delineated the required area release the left mouse button;
 - Select the required chart. To do this move the mouse cursor to the chart field, position it on the frame of the required chart and double click the left mouse button: the selected chart turns blue;
 - To select other charts position the mouse cursor on the next required chart. Press <Ctrl> key and without releasing it click the left mouse button. Repeat the procedure for selecting the required number of charts (the frames will be highlighted with the blue colour);
 - Place the charts in the BUCKET folder by positioning the cursor on the button  and pressing the left mouse button.
- To delete a mistakenly selected chart use the following procedure:
- Position the cursor on the button  and press the left mouse button.
 - Position the mouse cursor on the frame corner of the required chart, delineate the chart to be deleted by moving the cursor without releasing the left mouse button. The chart frame will turn black.

- **Selection of charts one by one from the Information Panel**
 - Position the cursor on CHART BY CHART catalogue in the Information Panel and double click the left mouse button: the Information Panel displays a list of charts and catalogues with numbers and brief description of the charts' geographic positions;
 - Position the cursor on the required chart and press the left mouse button: on the Chart Panel the chart's frame will turn blue;
 - Select the next chart by positioning the mouse cursor on the required chart and pressing the left mouse button keeping <Ctrl> key depressed;
 - Place all the selected charts into the BUCKET folder (see Fig. 6);

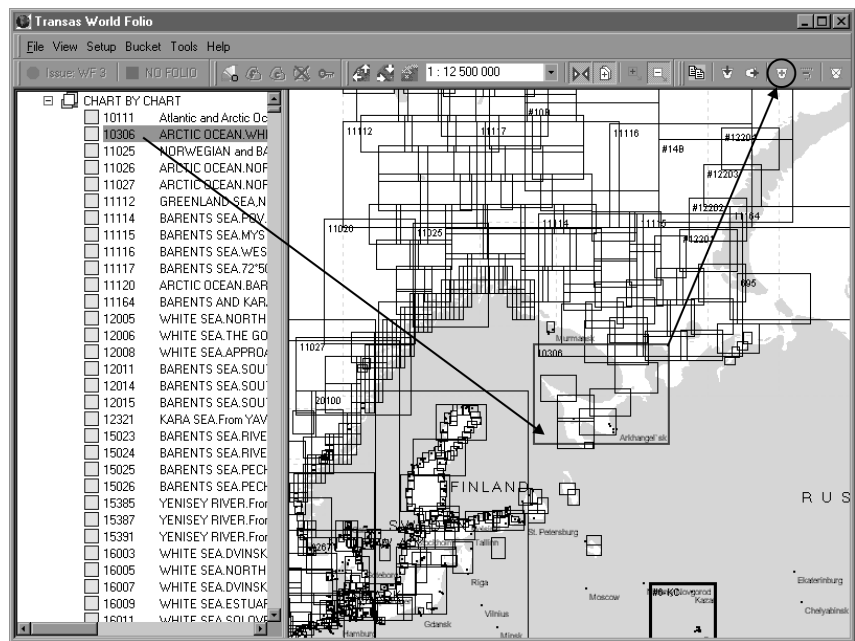



Fig. 6

3.4. Viewing of the selected charts

- **Viewing of the selected charts**
 - Position the cursor on the catalogue  BUCKET on the Information Panel and press the left mouse button;

- The map of the world on the Chart Panel shows frames of the selected charts;
- To magnify the display of the area (Zoom) on the Chart Panel cut out the area by using the cursor with the left mouse button depressed.

Viewing of the selected charts and Folio numbers on the Chart Panel

- Position the cursor on BUCKET catalogue and double click the left mouse button: a list of numbers of the selected charts or **Folios** is displayed;
- Position the cursor on the name and press the left mouse button: the Chart Panel will display the selected chart frame or a **Folio** (chart frames will be shown in the blue colour).

Viewing of reference information on the selected charts

- Position the cursor on BUCKET catalogue and double click the left mouse button: a list of selected charts' numbers will be displayed;
- Position the cursor on the name and press the right mouse button: a context menu will be displayed;
- Use the cursor to select **Properties** parameter in the context menu and press the left mouse button: the Chart Panel will display an information window in the following form.

